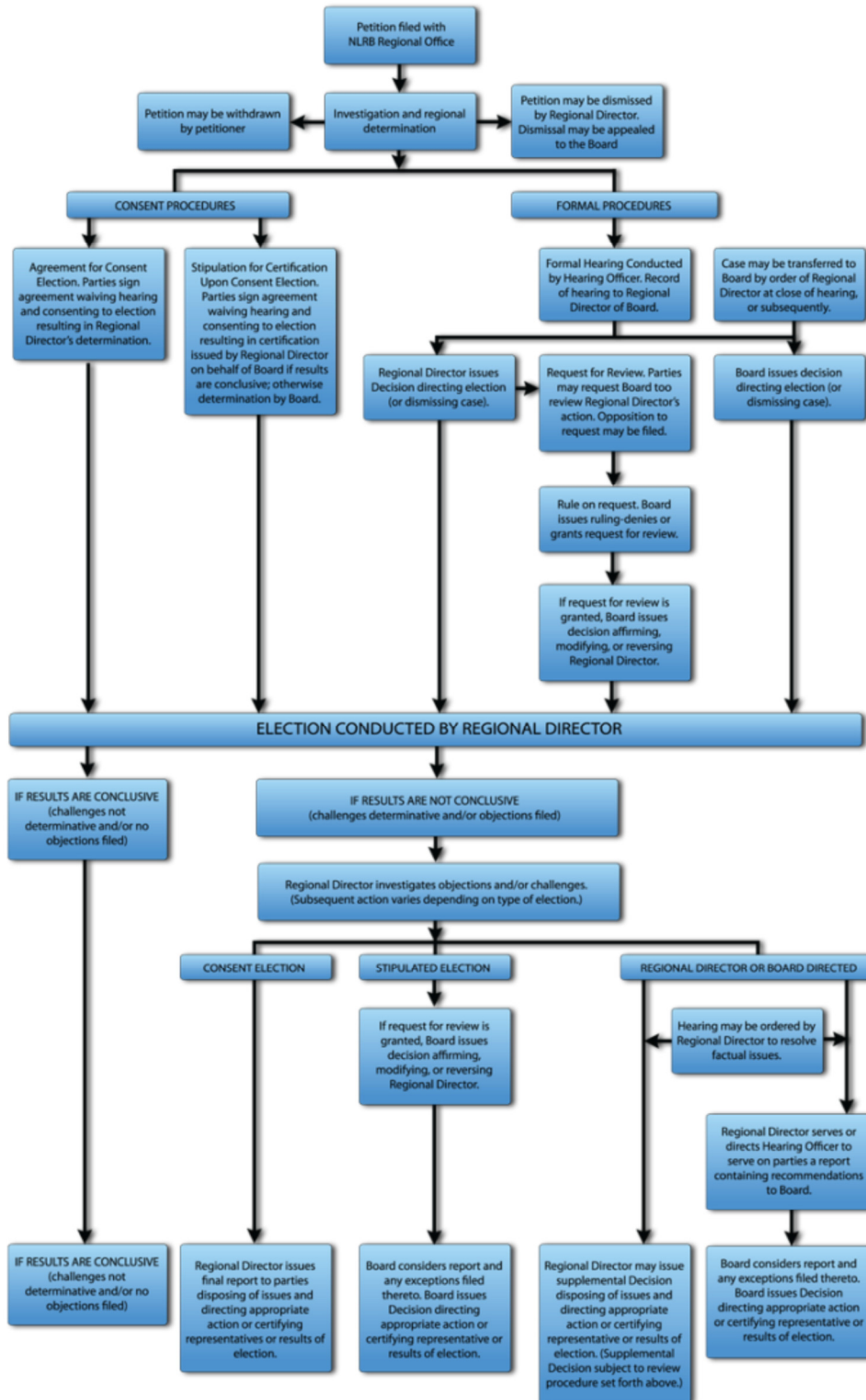


[Home](#) » [Former process for Representation elections](#)

Former process for Representation elections

The chart below details the representation election process prior to 4/30/2012.



In this Section

- [Home](#)
- [Rights We Protect](#)
- [What We Do](#)
- [Who We Are](#)
- [Cases & Decisions](#)
- [News & Outreach](#)
- [Reports & Guidance](#)

Get E-mail Updates
Sign up for updates or to access your subscriber preferences

Resources

- [The NLRB Process](#)
- [Employee Rights Poster](#)
- [Find a Case Page](#)
- [File Case Documents](#)
- [Fact Sheets](#)
- [Graphs & Data](#)
- [Find Your Regional Office](#)
- [FAQs](#)
- [Forms](#)
- [National Labor Relations Act \(NLRA\)](#)
- [Related Agencies](#)

SHARE

[Printer-friendly version](#)